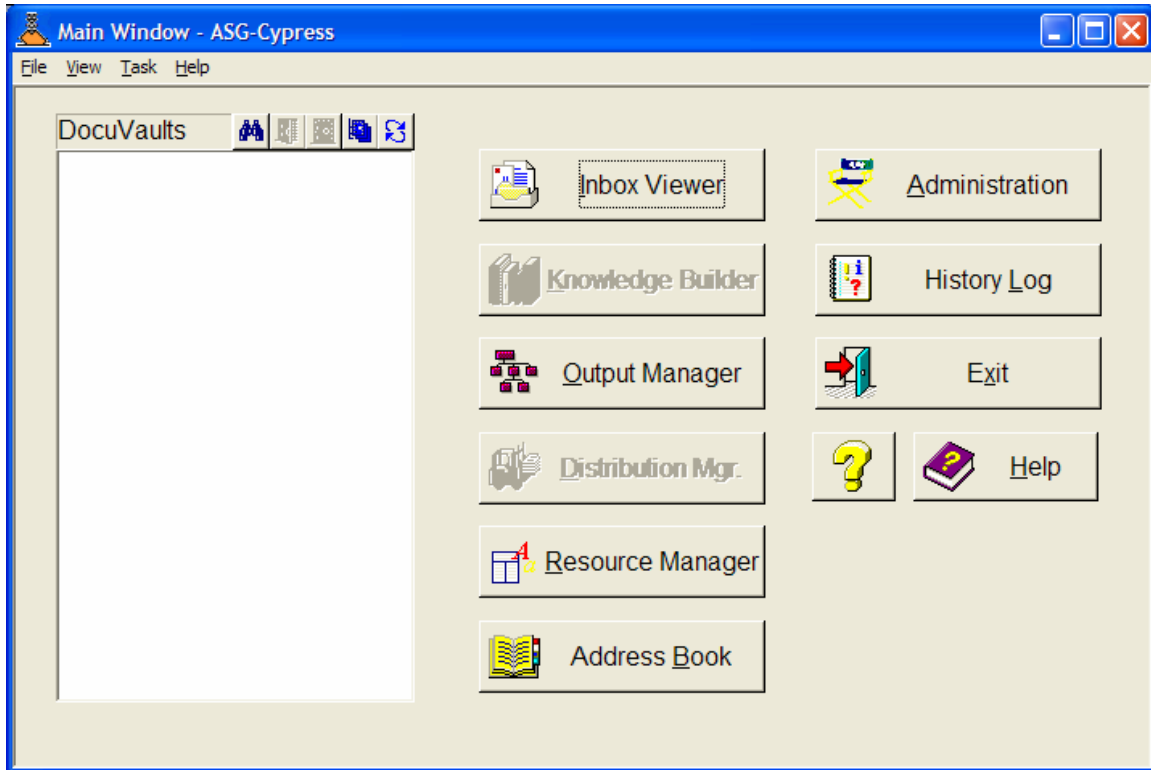


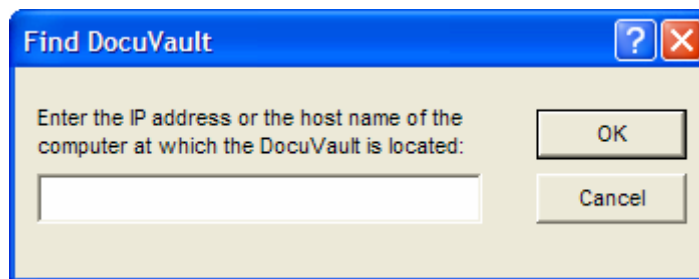
Cypress Installation Instructions

Go to: cypress.doit.wisc.edu and follow the installation instructions.

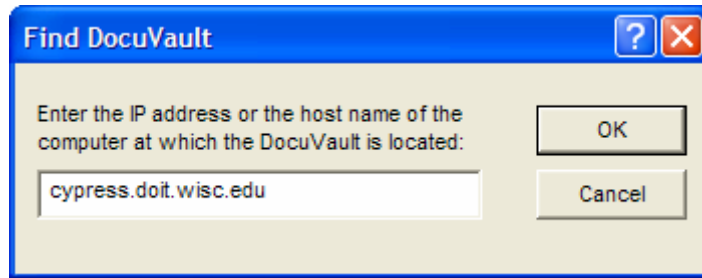
Once the client is running you will see this screen.



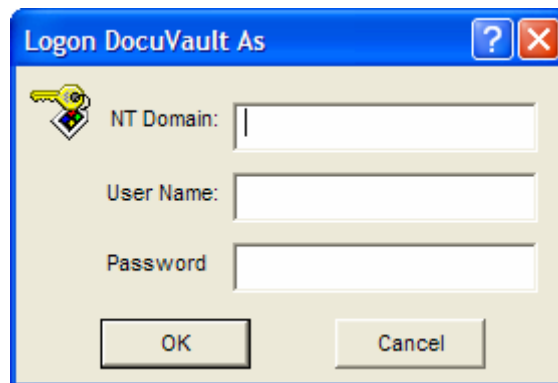
You need to click on the icon on the upper left that looks like binoculars. Once you click on this, you will be asked the address of the DocuVault.



Type in cypress.doit.wisc.edu



Now you will be challenged to Logon to the DocuVault. This is as it was in the past however with the new cluster environment, we also implemented Active Directory.



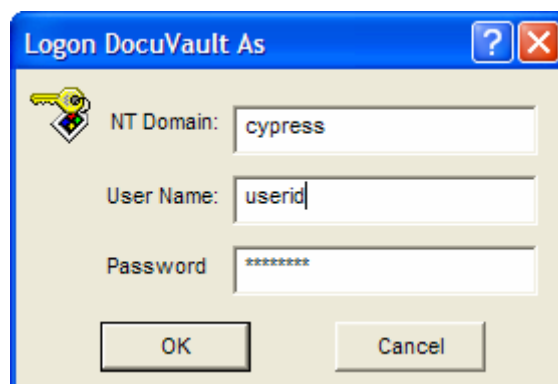
Enter your information as shown below. You need to use a domain name of cypress.

NT Domain: cypress

User Name: Enter your 3 digit 3270 logon

Password: Contact payroll@ohr.wisc.edu or call 608 262-3558 to obtain the password.

Please provide your 3270 logon ID.



Now you will be at this screen. The buttons you have available may be different than this picture. The available buttons are dependent on your security level.

