

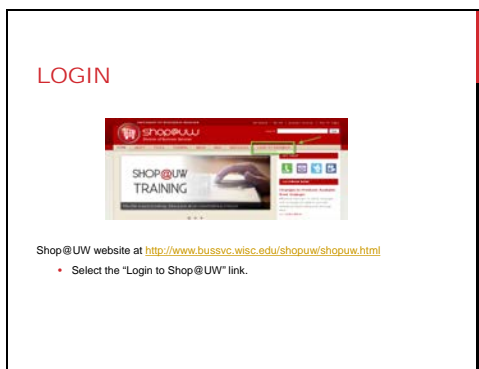
Login to Shop@UW

Slide 1



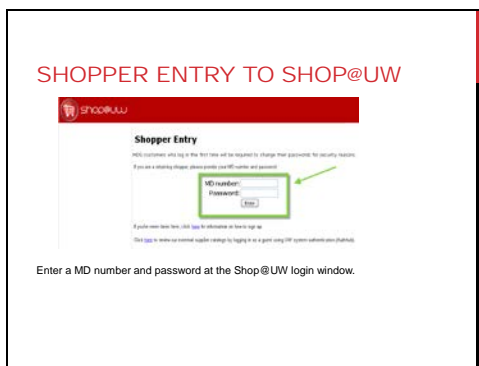
This tutorial reviews the login process to Shop@UW.

Slide 2



- Go to the Shop@UW website at <http://www.bussvc.wisc.edu/shopuw/shopuw.html>.
- Select the "Login to Shop@UW" link.

Slide 3



- Enter an MD number and password at the Shop@UW login window.
- UW System users without an MD number may use the Guest Account link to review external supplier catalogs by logging in through the UW system authentication hub.
 - Please Note: Access to Shop@UW via the guest account link is limited to UW system schools.
- To obtain an MD number, see the Shop@UW Account Setup & Revision web page on the Shop@UW reference web site at <http://www.bussvc.wisc.edu/shopuw/account.html>.

Login to Shop@UW

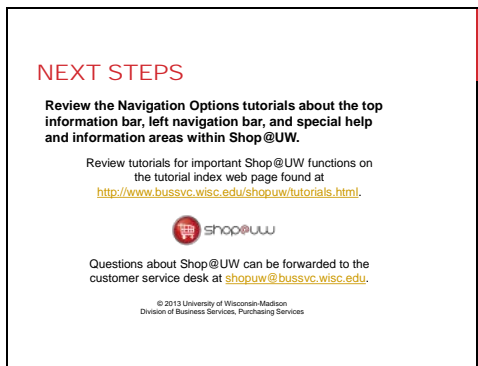
Slide 4



The login process navigates the shopper to the Shop@UW store lobby.

- The lobby displays links to UW-Madison MDS Warehouse and Shop at External Suppliers.
- Select the "Shop at External Suppliers" link and to continue to the Shop@UW storefront and make a purchase from available suppliers.

Slide 5



Review the Navigation Options tutorials available on the tutorial index web page found at <http://www.bussvc.wisc.edu/shopuw/tutorials.html> for an overview of the top information and left navigation bars.

Questions about Shop@UW and any log in issues can be forwarded to customer service at shopuw@bussvc.wisc.edu .